

Overall Vibration Default Alert Levels Guide

Overall vibration measured in velocity (in/sec) has been utilized by operations and maintenance people for many years to quantify and gauge the severity of a machine problem. It is effective at screening and quantifying common rotating equipment failure-modes.

The Overall vibration measurement provides a summation of the low-frequency vibration energy, which indicates fault conditions such as imbalance, misalignment, looseness, and late-stage bearing problems.

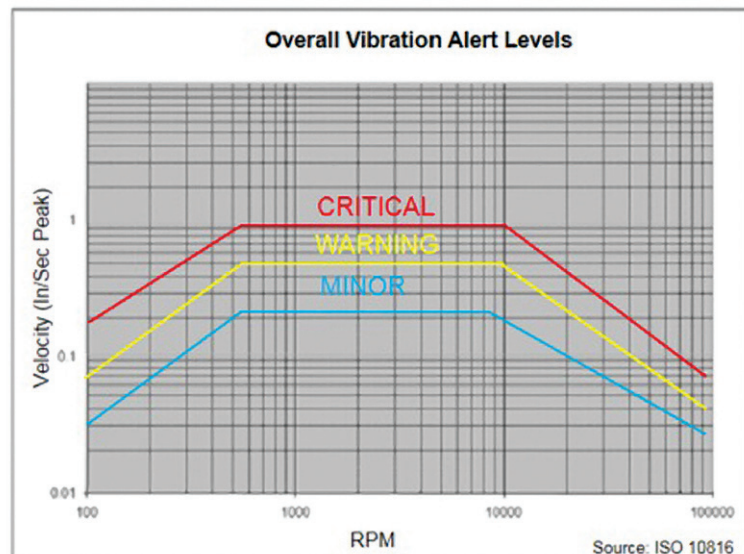
ISO 10816 is a commonly used standard for general fault levels at various turning speeds and defines the measurement bandwidth as 2 Hz to 1kHz.

For general purpose machines running between 600 to 10,000 RPM, the alert guidelines are as follows:

MINOR **0.2 in/sec Peak**

WARNING..... **0.5 in/sec Peak**

CRITICAL **1.0 in/sec Peak**



223-0172-000 Rev. A 1/18

ATEK Access Technologies
10025 Valley View Road, Ste. 190
Eden Prairie, MN 55344 U.S.A.

PH: 1.800.523.6996
FAX: 1.800.589.3705
+1.218.829.9797

www.atekaccess.com

**Access Technologies**

Access the power of technology.