

Battery Guide

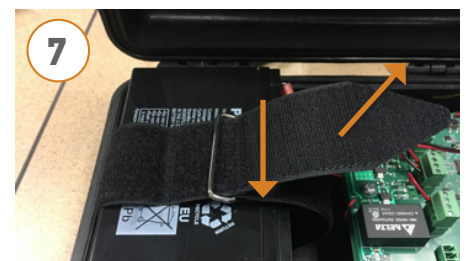
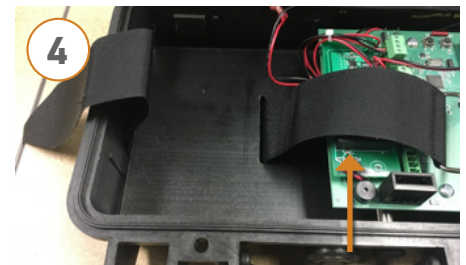
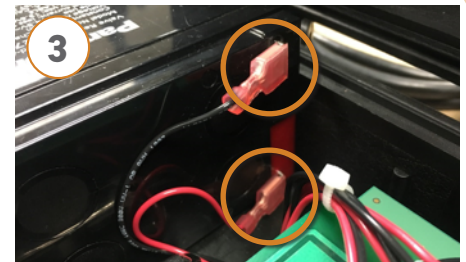
for AssetScan Models ASB, ASM, ASV



The power of analytics. **Delivered.**

Battery Replacement

- 1** Open transmitter case by pulling up on two latches on front of case. Battery is located on left side of case.
- 2** Peel back end of Velcro strap and pull it through metal buckle so it is no longer around battery.
- 3** Disconnect red and black wires from battery. Battery can be pulled out if it's difficult to reach connectors. Remove old battery from case.
- 4** Pull up on metal buckle from bottom of case to show more buckle strap.
- 5** Connect red and black wires to their respective terminals on a new battery.
- 6** Lay new battery in case so bottom of battery is against left side of case. Make sure terminals are towards back of case.
- 7** Slide Velcro strap through metal buckle.
- 8** Pull on edge and end of Velcro strap in order to feed across battery to position buckle at bottom of case.
- 9** Pull tight and fasten Velcro to itself around battery. Close and latch lid.



Battery Guide

for AssetScan Models ASB, ASM, ASV



The power of analytics. **Delivered.**

Battery Recovery

- 1 If battery voltage is at least 8 volts, a full charge can take 6-8 hours. Charging is indicated by charger LED immediately turning **RED** during charging, then **GREEN** when done.
- 2 If battery is less than 8 volts, battery charger LED will stay **GREEN**, indicating float (trickle) mode. In this case, to expedite battery charging, it is required to disconnect power connector (shown in figure 2) on transmitter's electronics board until charger LED turns **RED** (normal charge mode). Once in normal charge mode, charger will provide enough current to power transmitter's electronics and power connector can then be re-connected.

Notes:

Best practice is to charge battery before it gets below 11 VDC.

This charger is designed to avoid charging a really low battery at a high rate as it will cause battery damage (outgassing and plate damage), reducing battery life significantly.

Float mode charging will not provide enough energy to complete a transmitter's reporting process, thus charger will continue in float mode and charger LED will never turn **RED** to indicate charge mode.



Please recycle old battery at a local recycling center.

223-0184-000 Rev. A 6/19

ATEK Access Technologies
10025 Valley View Road, Ste. 190
Eden Prairie, MN 55344 U.S.A.

PH: 1.800.523.6996
FAX: 1.800.589.3705
+1.218.829.9797

www.atekaccess.com

ATEK Access Technologies

Access the power of technology.

©2019 ATEK Access Technologies, LLC. All Rights Reserved. AssetScan images and marketing materials are protected by various patents, copyrights and/or trademarks. ATEK assumes no responsibility for any errors which may appear in this document, reserves the right to change devices or specifications detailed herein at any time without notice, and does not make any commitment to update the information contained herein. No licenses to patents or other intellectual property of ATEK are granted by the Company in connection with the sale of AssetScan products, expressly or by implication.